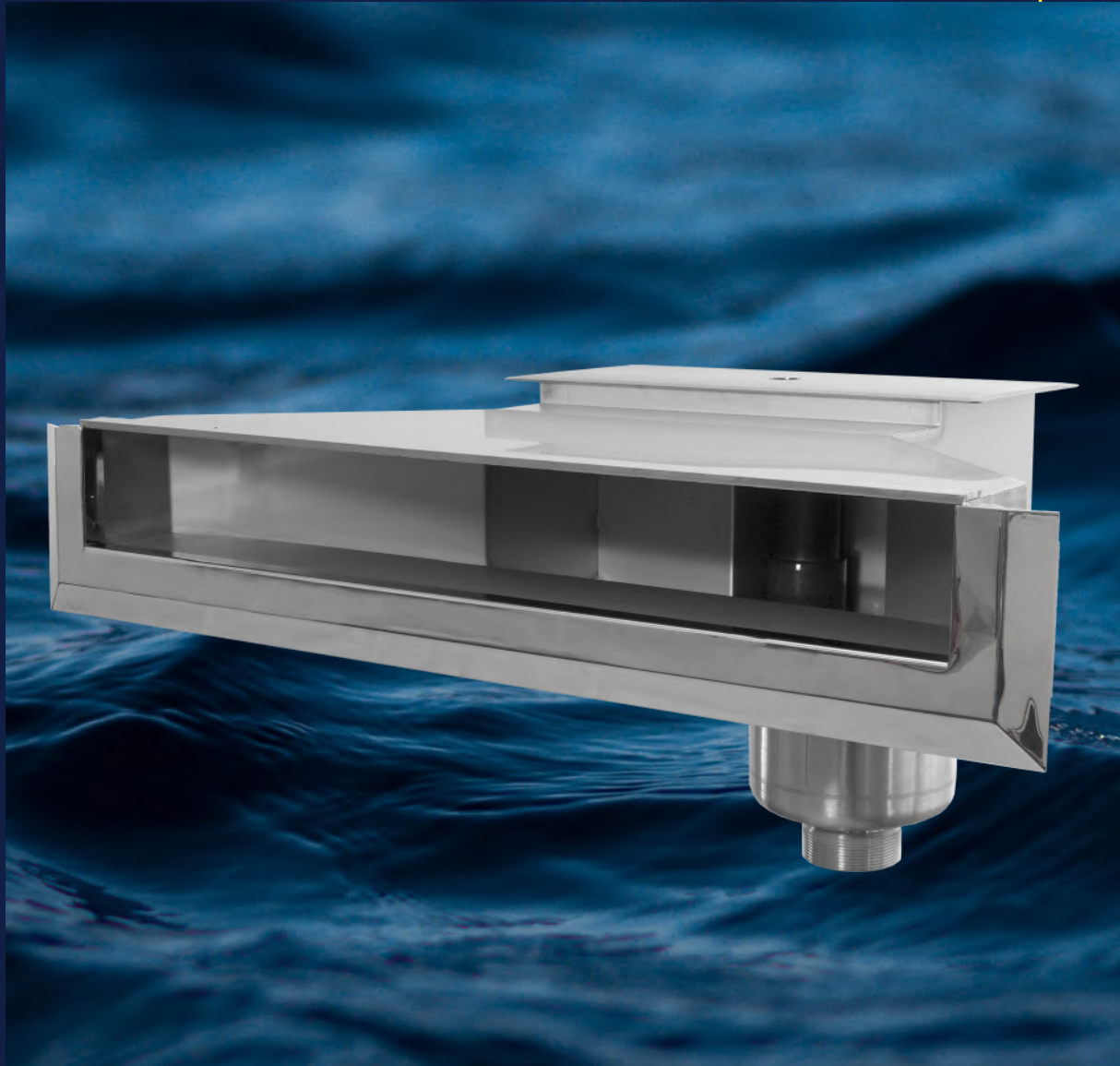


WHITE GOODS ABS & V4A

ocean. smart



BUILT IN FOR LONG-TERM





ocean

CLEVERLY COMBINED WITH THE SKIMMER DELUXE HIGH75

The very flat design of Peraqua® skimmer extensions allow an impressive low waterline and gives a nearly seamless transition from waterline to pool edge. The unique and flexible modular system enables the individual configuration of design and color of the pool.

The Ocean® Skimmer M5/PT deluxe contains a holder for a level sensor. The control unit and the protective grating are optionally available. In case of low water level the level sensor, which is connected to a solenoid valve via a controller, fills the pool with water. This avoids a dry running of the pump.

HIGH WATER LEVEL SKIMMER

Ocean® Skimmer M5 deluxe High75, ABS + V4A

high water level up to 4 - 5 cm, square V4A flange cover & V4A extension, high polish, for liner, built-in and concrete pools, suction width 666 cm, incl. sieve basket, holder for PVC niveau sensor, d50 solvent + 2" female connection
Available in white, grey, black



Smart Skimmer High75 ABS

high water level up to 6-7 cm, Suction width 700 mm, for liner, concrete and built-up pools, incl. sieve basket, R 1½" + 2" female thread connection

Available in white and black



Ocean® Skimmer M5 deluxe High47 ABS + V4A

extra high water level up to 4-5 cm, square V4A-flange cover & V4A extension, high polish, Suction width 390 mm, for liner, concrete and built-up pools, incl. sieve basket, holder f. PVC niveau sensor, d50 solvent + 2" female connection



Smart Skimmer High50 white ABS

high water level skimmer ABS, for liner and built-up pools, sealing, screw set AISI-316, sieve basket, R1½"+2" female connection, recommended flow rate 5m³/h



Niveau control NC01 plug-in

with time delay switch (from 2-135 sec), incl. magnetic floater for easy installation on Ocean® skimmer M5 and PT, skimmer is equipped with an integrated and adjustable holder for the niveau floater



Ocean® water regulation system

mechanic, ABS, water connection ¾", body connection d63/d50, incl. adjustable floater



SKIMMER DELUXE & ACCESSORIES

M5 or PT

Ocean® Skimmer deluxe, M5 oder PT

for liner, built-up, concrete and tile pools

incl. basket, flange set, Skim Vac, plate d32/38, flange, M5 thread inserts A4 (SS316), screw set, sealing, reduction 2" / 1½" and overflow connection d50, incl. notch for PVC niveau sensor - recommended flow rate 8 m³/h - for each 25 m² water surface on skimmer recommended



Niveau sensor in the Skimmer against surcharge

The niveau sensor is optionally included, the sensor is connected to a solenoid valve via a controller and automatically fills the pool with water.

M5: white
PT: white, black, grey

Ocean® protective grating

for Skimmer Ocean® deluxe, against leaves and all other pool contaminations, which might affect the functionality of the PVC solenoid niveau switch NC01. Retrofitting possible



Ocean® wide mouth extension deluxe

25 cm mounting depth, sealings, flange, screw set, for optimal front extension and enlargement of Ocean® skimmer deluxe M5/PT

M5: white, with M5 thread inserts A4(SS316)
PT: white, grey, black, PT self-drilling



Ocean® Skimmer extension deluxe

25 cm mounting depth, sealings, flange, screw set, for optimal front extension of Ocean® skimmer deluxe M5/PT

M5: white, with M5 thread inserts A4(SS316)
PT: white, black, PT self-drilling



Ocean® wide mouth/slanted flange (6°)

25 cm mounting depth, for mounting straight on the sloping pool flange and for front extension and enlargement of Ocean® skimmer deluxe M5/PT

M5: white, with M5 thread inserts A4(SS316)
PT: grey, black, PT self-drilling



Solvent sealing for Ocean® Skimmer deluxe

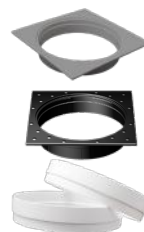
alternative for the included double lip sealing for Ocean® skimmer deluxe, solvent sealing



Collar & rings for Ocean® Skimmer deluxe

individual height extension for Ocean® Skimmer deluxe M5/PT

collar: grey, black
rings: white



Ocean® height extension deluxe

incl. 2 pcs extension rings (Teleskopsystem), square cover for round standard skimmer lids, ABS, white



Ocean® skimmer lid & height extension V4A (SS316)

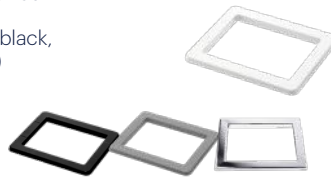
AISI316/SS316, for Ocean® skimmer deluxe, square 250 x 250 mm, incl. round cover and height compensation 4.5 cm



Frame for Ocean® Skimmer deluxe

Dimensions: 263 x 211 mm

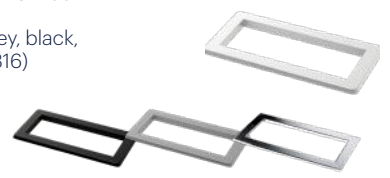
white, grey, black, V4A (SS316)



Wide mouth frame for Ocean® Skimmer deluxe

Dimensions: 466 x 242 mm

white, grey, black, V4A (SS316)



Smart winter plug

1½" EPDM 38 - 51 mm
or
2" EPDM 51 - 63.5 mm



ALL DIMENSIONS AND
INSTALLATION MANUALS AT
SHOP.PERAQUA.COM

Ocean®

INLET NOZZLES

deluxe; M5 or PT

Ocean® wall conduit deluxe

PT type for built-up, liner & tile pools, with PT Screw set self-drilling



M5 type for built-up, liner, tile & concrete pools with integrated M5 thread inserts A4 (SS316)

2" female / male thread / solvent d50 mm, incl. 2 fixing brackets, holes for reinforcing iron bars and counter nut for the wall formwork



M5 type with A4 thread inserts

Ocean® inlet nozzle deluxe M5, DIN

with ball acc. DIN EN16582, Sealing, Screw set, in combination with wall conduit deluxe M5



white, grey, black



Ocean® Inlet nozzle deluxe M5, Standard

with ball universal type 13/17/21 mm, Sealing, Screw set, in combination with wall conduit deluxe M5



grey

Ocean® Inlet nozzle deluxe PT, DIN

for liner pools, with ball acc. DIN EN16582, Sealing, PT Screw set self-drilling, in combination with wall conduit deluxe PT



white, grey

Ocean® Inlet nozzle deluxe PT, DIN

for concrete & tile pools, with ball acc. DIN EN16582, 2" male threads/ d50, application for direct turn-in, in combination with wall conduit deluxe PT



white

Ocean® Inlet nozzle deluxe M5, DIN, short version

for liner & stainless steel pools, with ball acc. DIN EN16582, Screw set, 2 Sealings, M5 stainless steel thread inserts, solvent connection d50/63, set



white

Ocean® Inlet nozzle deluxe PT, DIN, short version

for liner & stainless steel pools, with ball acc. DIN EN16582, PT Screw set self-drilling, 2 Sealing, solvent connection d50/63, set



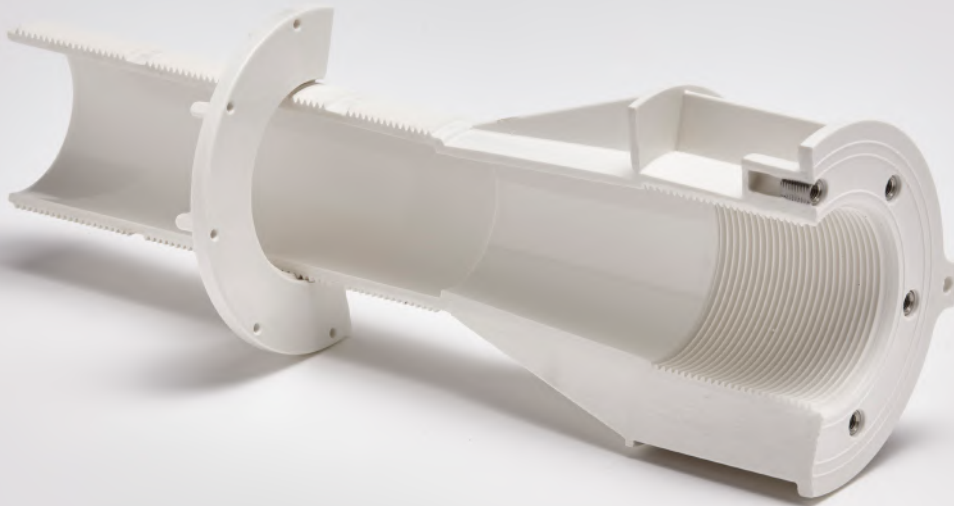
white, grey

Ocean® Inlet nozzle PT, Standard, short version

for liner & stainless steel pools, with ball universal type 13/17/21 mm, Screw set, 2 Sealing, PT Screw set self-drilling, solvent connection d50/63, set



black



ocean.

THE DIVERSE WORLD OF THE OCEAN® WHITE GOODS

The unique modular system enables the precise configuration of design and color of your pool components exactly according to customer wishes and is optimally designed for installation in Ocean® system brick (installation depth = 25 cm).

We offer skimmer plates, extensions, widenings, inlets, V4A frames for floor drains, and much more in the colors black, grey and white. They are perfectly combinable with the matching pool liners, especially with our new liners in stone look.

All ABS products from our White Good Range are chlorine, UV, salt water and ozone resistant and comply with the strictest standards and criteria.

M5 VS. PT

THE LITTLE DIFFERENCE



The housing is equipped with high-quality stainless steel inserts A2. Thereby a frame with high quality M5 / A4 screws can be fixed.



In contrast, in PT parts you can screw in directly special developed A2 screws into the plastic housing.

**collar & rings for
Ocean® Skimmer deluxe**

individual height extension for
Ocean® Skimmer deluxe M5/PT

collar: grey, black
rings: white



**Ocean® skimmer lid &
height extension V4A (SS316)**

AISI316/SS316, for Ocean®
skimmer deluxe, square 250x250
mm, incl. round cover and height
compensation 4,5 cm



**Solvent sealing for Ocean®
Skimmer deluxe**

alternative for the included double
lip sealing for Ocean® skimmer
deluxe, solvent sealing



**frame for
Ocean® Skimmer deluxe**

Dimensions: 263 x 211 mm

white, grey, black, V4A (SS316)



**Wide mouth frame for
Ocean® Skimmer deluxe**

Dimensions: 466 x 242 mm

white, grey, black, V4A (SS316)



ALL DIMENSIONS AND
INSTALLATION MANUALS AT
SHOP.PERAQUA.COM

Ocean®

OCEAN® MAIN DRAINS

M5 or PT

**Ocean® Main drain deluxe
M5**

for built-up, liner, concrete & tile
pools, with M5 stainless steel
A4 thread inserts & screws, flat
cover, 2" female thread, flange
screw set, sealing set, max.
flow rate 15 m³/h



white

**Ocean® Main drain deluxe
PT**

for built-up, liner, concrete
& tile pools, PT screws,
flat cover, 2" female thread,
flange Screw set, sealing set,
max. flow rate 15 m³/h



white, black

Ocean® cover stainless steel

for Ocean® Main drain
M5 and PT, V4A (SS316)
stainless steel, AISI316,
d 222 mm



Ocean® flange

for Ocean® Main drain M5 and
PT, ABS, without grid lid

grey



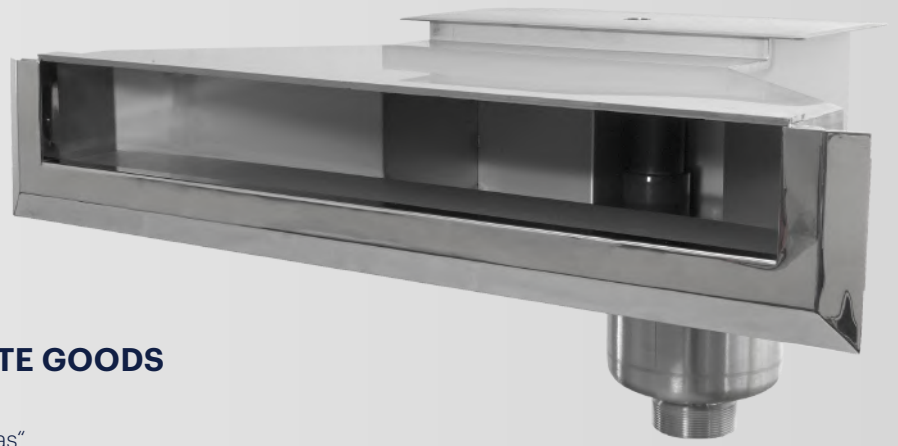
Ocean® grid lid

for Ocean® Main drain
M5 and PT, ABS

grey



SWIMMING IN GLEAMING SHINE



OCEAN® STAINLESS STEEL WHITE GOODS

Puristic, linear design and many practical „extras“ characterize the V4A Ocean® series of built-in parts.

Among other things, the Ocean® V4A offers high water level skimmer series 500 & 700 PRO highest water lines for skimmer pools, as well as an integrated bracket for an automatic level sensor, a d50 overflow ensures operational safety and an integrated refill line d20 for a stable, high water line after the backwashing process.

The skimmer lid can be fixed to the housing with a clip, R 2½“ internal thread outlet ensures a proper flow and thus broad surface cleaning, the unique V4A frame is an unmistakable design element in your pool and is ideal for the square Ocean® inlet nozzles. Both product lines can be supplied with a matt (square) or polished (round) surface. The assembly of the round or square Ocean® V4A nozzles can be carried out using the ABS or V4A Ocean® wall ducts.



V4A WHITE GOODS

Ocean® high water level skimmer stainless steel V4A High500

for liner, polyester and concrete pools, with overflow d50 and integrated holder for niveau regulation, with lid, stainless steel basket, suction width 460 mm, connection 2“ female and 2½“ male



Ocean® high water level skimmer stainless steel V4A High500 PRO

for optimal high water level, for liner, polyester and concrete pools, with overflow d50 and integrated holder for niveau regulation, with lid, stainless steel basket, suction width 460 mm, connection 2“ female and 2½“ male



Ocean® high water level skimmer stainless steel V4A High700 PRO

for optimal high water level, for concrete, liner and build-up pools with lid, with overflow d50 and integrated holder for niveau regulation, stainless steel basket, suction width 660 mm, overflow d50, connection 2“ female and 2½“ male



Ocean® wall conduit V4A PRO

with water stopp and thread, for liner, concrete and tile pools, 2“ female thread



Types:
- l = 250 mm
- l = 300 mm

Cover for Ocean® inlet nozzle V4A

cover for all Ocean® Inlet nozzles, incl. cover and ball, V4A AISI316, 1½“ male thread



Ball DIN:
7 drilling holes à 5 mm,
Ball universal type:
- Ø 13 mm
- Ø 18 mm



Cover for Ocean® inlet nozzle PRO „Square“

brushed, DIN V4A AISI 316, suitable for all ABS Ocean® inlet nozzles, V4A incl. cover, ball and spacer ring, 1½“ AG



Ball holes:
- 7 drilling holes à Ø 5 mm
- Ø 13 mm
- Ø 18 mm



Ocean® main drain V4A PRO

polished, d150 mm, for liner, concrete and tile pools, 2“ female thread, with ground connection



Ocean® main drain V4A PRO „Square“

brushed, 150 x 150 mm, for liner, concrete- and tile pools, 2“ female thread



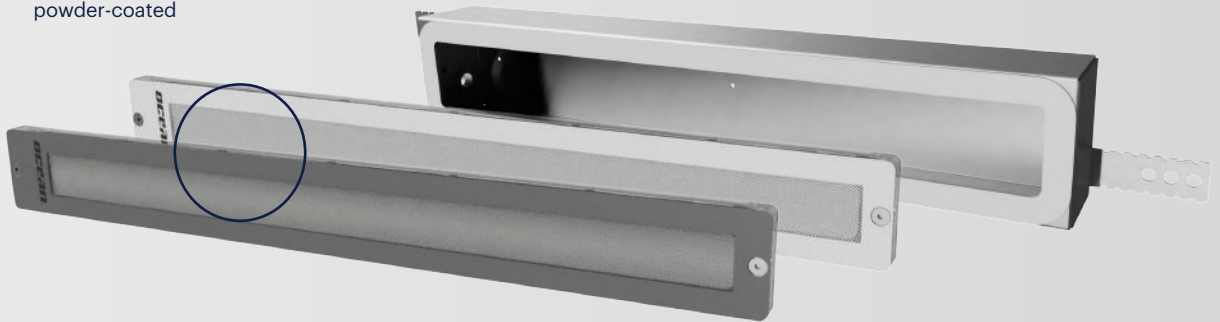
ALL DIMENSIONS AND
INSTALLATION MANUALS AT
SHOP.PERAQUA.COM

OCEAN® V4A UNDER WATER LIGHTING

The high-quality and modern design of the stainless steel Ocean® spotlights made in Austria underlines the character of a classy pool concept.

The new underwater lights are designed for easy installation. The RECTANGULAR series is installed using fastening bolts and the SQUARE series using an innovative, magnetic mounting system.

In the versions V4A
brushed and white
powder-coated



Specially developed
mounting brackets for
mounting in the Ocean®
system brick or PP-pools



MAGNETIC & CONCISE

The new Ocean® spotlight SQUARE is installed in the pool with a unique, magnetic mounting system. The design was constructed in a way the headlights can be integrated concise into the pool wall.

UNDER WATER LIGHTS

LED/RGB and accessories

Ocean® under water light complete sets **Square**

RGBW LED, for liner-, concrete-, tile and stainless steel pools, innovative magnetic mounting system, 110x110 mm, approx. 2500 lumen, incl. 15 m cable, incl. flange set, with flush inground housing, Types:
- brushed
- powder coated



Ocean® under water light complete sets **Rectangular**

RGBW LED, for liner-, concrete-, tile and stainless steel pools, 60x570 mm, approx. 2200 lumen, incl. 15m cable, incl. flange set, with flush inground housing,

Types:
- brushed
- powder coated



Ocean® control box DMX compatible

for under water light Square and Rectangular. Can be equipped with up to 4 channels, body IP specified. 1 additional channel incl., ex works with plug, 350mA, 24V, 100W, power adapter inside



Ocean® wall conduit V4A for under water light **Square**

incl. fastening flaps for clean and quick installation. Cable connection with 3/4 female thread, piping with the corresponding Praher-IBG fitting and flex hose



Ocean® wall conduit V4A for under water light **Rectangular**

incl. fastening flaps for clean and quick installation. Cable connection with 3/4 female thread, piping with the corresponding Praher-IBG fitting and flex hose



Ocean® DMX interface incl. remote control

for under water lights Square and Rectangular. Remote control with touch colour wheel. Easy installation and implementation, installed in it's own box



VISION Pro RGBW 17/10/5 **RGBW**

Pro 17:
7000 lm
180 W
Ø 170 mm

Pro 10:
3500 lm
85 W
Ø 100 mm

Pro 5:
1200 lm
33 W
Ø 50 mm

Programmable RGBW color modes, dimming option, very wide beam angle, including removable 2 m rubber cable.

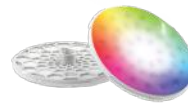


VISION Spectra 17/10/5 **RGB**

Spectra 17:
1600 lm / 2450 lm
20 W / 32 W
Ø 170 mm

Spectra 10:
1550 lm
20 W
Ø 100 mm

Spectra 5:
450 lm
8 W
Ø 50 mm



VISION 17 + 10 + 5 cm **light covers**

Covers available in white, sand, light grey, light blue, blue, black as well as V4A stainless steel

Optimal colour matching with Ocean® deluxe swimming pool liners.



VISION Adagio Pro 17/10/5 **white**

Pro 17: 5500 lm, 57 W, Ø 170 mm

Pro 10: 2600 lm, 25 W, Ø 100 mm

Pro 5: 750 lm, 8 W, Ø 50 mm



VISION Adagio Pro 17/10/5 **warm white**

Pro 17: 4950 lm, 55 W, Ø 170 mm

Pro 10: 2400 lm, 23 W, Ø 100 mm

Pro 5: 700 lm, 8 W, Ø 50 mm



VISION Spectra 17/10/5 **white**

Spectra 17: 1675 lm / 2400 lm, 17 W / 32 W, Ø 170 mm

Spectra 10: 1500 lm, 20W, Ø 100 mm

Spectra 5: 550 lm, 8 W, Ø 50 mm



Remote control for Adagio Pro, Spectra & Moonlight

with transformer

for function OFF/ON and colour regulation for RGB MULTICOLOUR, incl. hand transmitter, operating distance 40-100 m, also for Moonlight (with transformer 200 VA, input 230 V AC/output 12 V AC max 200 W)



Remote control for VISION Spectra & Moonlight

without transformer

for functions OFF/ON and colour regulation for RGB MULTICOLOUR, incl. hand transmitter, operating distance 40-100 m, (without transformer, input 12 V AC)



Adagio Pro remote control

with transformer

DMX512 and RS-485 connection, incl. hand transmitter (with transformer 300 VA), dimming function

Hand transmitter upon request.



UNDER WATER LIGHTS

LED/RGB and accessories

VISION Moonlight Multicolor / White

with installation clamps for all common light brands and all common 300 W light frames, niches for retrofitting, optional with remote control, IP68, input voltage 8 V AC-14 V AC, 4 m, cable 2-wire, 16 colours

RGB type:
800 lm, 13 W
1550 lm, 23 W
2200 lm, 33 W

White type:
1350 lm, 14 W
2400 lm, 23 W
3500 lm, 35 W

We recommend Moonlight V4A stainless steel cover.



VISION wall conduit, short

for liner and concrete pools ABS, short design, hose connection 25 mm, thread connection inside

For VISION Pro, Spectra or Adagio Pro.



VISION wall conduit, long

for liner and concrete pools, long design, ABS, hose connection 25 mm

For VISION Pro, Spectra or Adagio Pro.



VISION wall conduit

for polyester/vinylester pools, PP pools, etc. ABS, with lock nut and female thread, connection inside

For VISION Pro, Spectra or Adagio Pro.



VISION wall conduit Stainless Steel

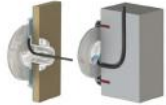
for Stainless Steel pools V4A stainless steel, with female thread, connection inside

For VISION Pro, Spectra or Adagio Pro.



VISION Moonlight installation set

incl. cover white (without lamp)



Transformer TORO DIN

220-230 V IN, 12 V AC OUT, for DIN rail mounting

150 W / 350 W / 700 W



Transformer TORO IP64

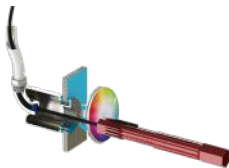
220-230 V IN, 12 V AC OUT, IP64, with plastic housing

150 W / 350 W / 700 W



Installation set

for VISION wall conduits



Smart under water light M5, 300W - 12V

ABS body, 300W-12V PAR 56 bulb (162,5 lumen), 1 m cable protection hose, 2,50 m 2 x 4 cable, corrosion free, chem. resistance, IP68 protection code, sealings, screw set, change of bulb without lowering of water level, illumination area: ~ 16 m² installation distance: ~ 4 m depth: 65 cm from above pool floor



Smart under water light M5, 300W - 12V

incl. 18x Stainless Steel inserts & 25 mm screws for liner pools, ABS 300 W 12 V, flange set, for polyester pools we recommend 35 mm screws



Electrical junction box

junction box made of strong, white ABS material

This junction box is compatible with all under water lights, with square lid, with O-ring and four stainless steel screws. UV-resistant and chem. resistance.



Smart under water light M5, 300W - 12V

with stainless steel cover, for liner pools incl. 2x Stainless Steel thread inserts A4 (SS316), ABS 300 W 12 V with flange set, 2,50 m cable, 1 m cable protection hose



Smart under water light PT

for retro fitting incl. halogen lamp 100 W-12 V or 50 W-12 V, ABS, 2,5m cable, 1 m flexible cable protection hose, glass protection, IP68, UV protection, illumination area/light: ~ 10 m², installation distance: ~ 2 m, depth: 65 cm from above pool floor



FAMILY, SPORT, RELAXATION – THERE IS LIFE IN A POOL.



PERAQUA®

A POOL FULL OF LIFE

It is our highest permission to enrich every pool with creative, perfect fitting, affordable and durable pool technology. Our focus is on the maximum ease of use, safety, cleanliness and sustainability of the selected technology for your pool projects.

Tailored to the digital age, you can choose between fully automatic pool control systems based on WIFI connection or manual control systems in **Peraqua® Quality**.

Our mission is to implement Peraqua® & Praher Top Quality in all areas of sales, marketing, service, logistics, training, repair, and after-sales service with the best dedication.

PERAQUA®



**Peraqua Professional
Water Products GmbH**
Handelsstraße 8, 4300 St. Valentin

T. +43 7435/58488-0
info@peraqua.com



shop.peraqua.com



PERAPLAS DEUTSCHLAND GMBH
Regensburger Ring 12, 91154 Roth
T. +49 9171 9677-1200
office.de@peraplas.com



PERAPLAS ČESKO s.r.o.
25101 Říčany-Jažlovice, Zděbradská 62
T. +420 323 63 76-73
office.cz@peraplas.com



CHEMIA BRUGG AG
Aarauerstrasse 51 | 5200 Brugg
T. +41 56 460 62 60
info@chemia.ch

Member of **PRAHER
GROUP**