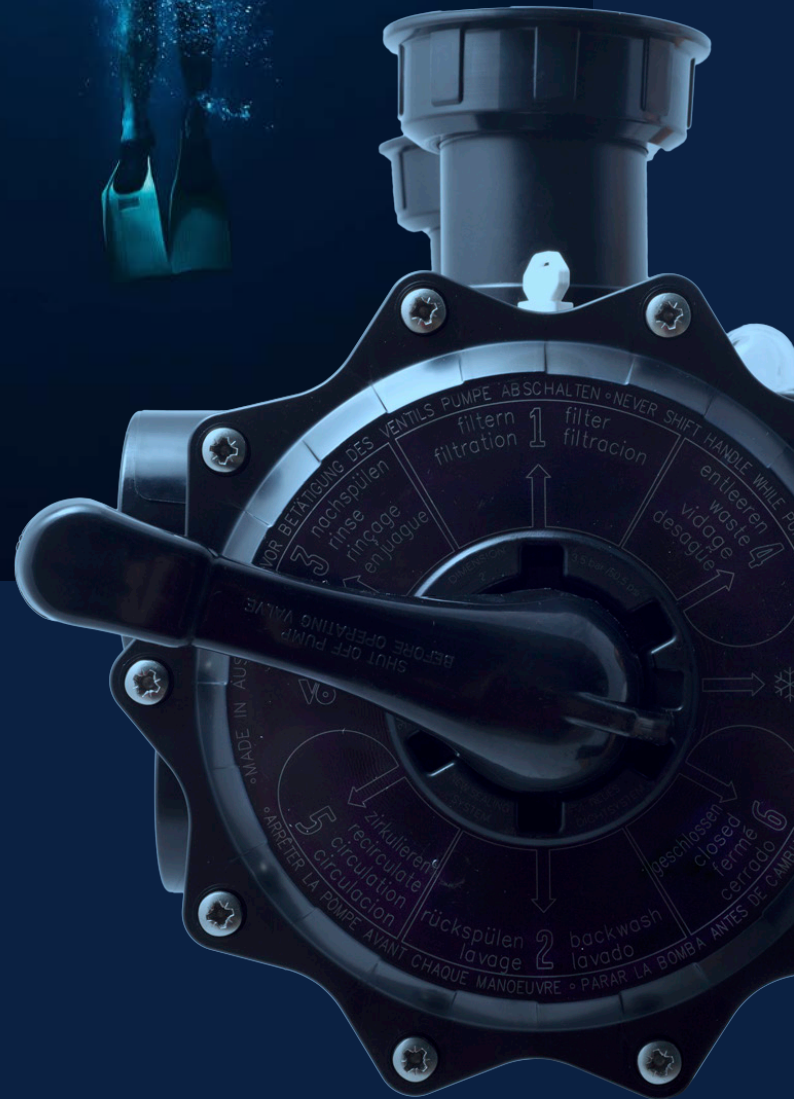
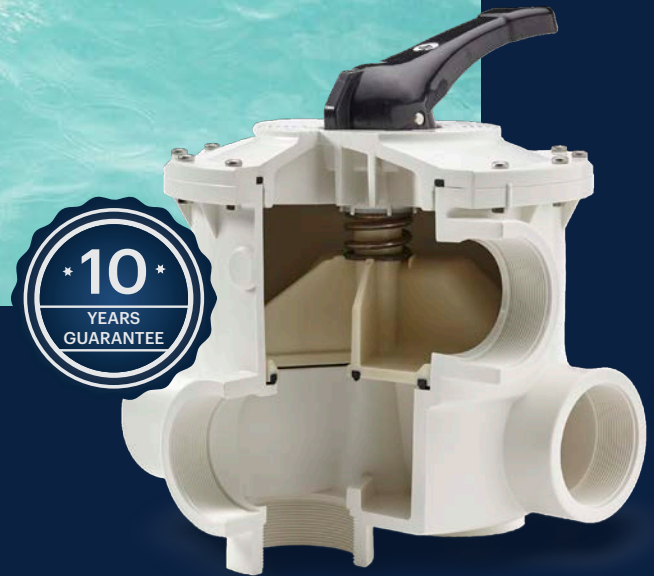


MANUAL BACKWASH VALVES



ON THE
CORRECT
POSITION



WHAT MAKES OUR BACKWASHVALVES SO UNBEATABLE?

MILLIONS HAVE TRIED AND TRUST

Praher backwash valves are trouble-free applied in a wide range of climatic and technical conditions worldwide

INNOVATIVE HOUSING SEALING SYSTEM

More than 45 years of experience in development and production in Austria guarantee maximum precision and clever solutions.

100% ABS HIGH-TECH MATERIAL

We are so confident in our products that we offer a 10-years spare part delivery and 10-years guarantee on housing breakage.

SUITABLE FOR EVERY POOLFILTER

Valves in white and black as well as multi-lingual and individual laser marking offer individuality in every technical room and for every common filter brand.

**DESIGNED
ENGINEERED &
MADE IN AUSTRIA**



Each sand filter system must be equipped with a backwash valve, which is the „heart“ of the complete filter system and regulates the filter water flow during a filtration process. Sand filters must be backwashed regularly (~ once a week).

After backwashing fresh water always need to be supplied immediately, to reach the required pool water level again. This ensures an further optimal filter process and avoids „dry running of the filter pump“. This can be done fully automatically by means of garden hose or with pool water level controls.

A fully automatic solution for pool water level control is the fully automatic AQUASTAR® Backwash Valve Series. Manual Praher Backwash Valves can easily be converted into modern, fully automatic backflush valves.



**USAGE OF 100 % ABS
HIGH-TECH ORIGINAL MATERIAL,
GUARANTEES ABOVE-AVERAGE
SERVICE LIFE**

**MULTI LINGUAL AND
INDIVIDUAL LASER
MARKING**

**OPTIMAL FLOW AND
PRESSURE LOSS VALUES**

**INNOVATIVE HOUSING
SEALING SYSTEM**





CHARACTERISTICS

- _ Easy handling
- _ Multilingual laser marking and packaging
- _ Optimal flow and pressure loss values
- _ Extreme low-noise operation
- _ Made of high-quality UV resistant and impact resistant ASA-GF
- _ High durable sealing material and pressure springs installed on the valve plate
- _ Pressure tightness and operation tests according DIN 3230
- _ Easy adaptation of automatic Aquastar® backwash valves
- _ Additional „winter position“ for release for the sealing system
- _ Individual colours on request

APPLICATION

- _ Swimming pools, natural pools, aquaristics, fish farms and water attractions (fountains) with temperatures up to +40 °C
- _ ASA GF swimming pools, sauna and spas with higher operating pressures and temperatures up to +50 °C
- _ Car wash installations and Smart Pool installations with Aquastar® adaptation



BACKWASH VALVES **SIDE MOUNT**



1 1/2"



2"



3"

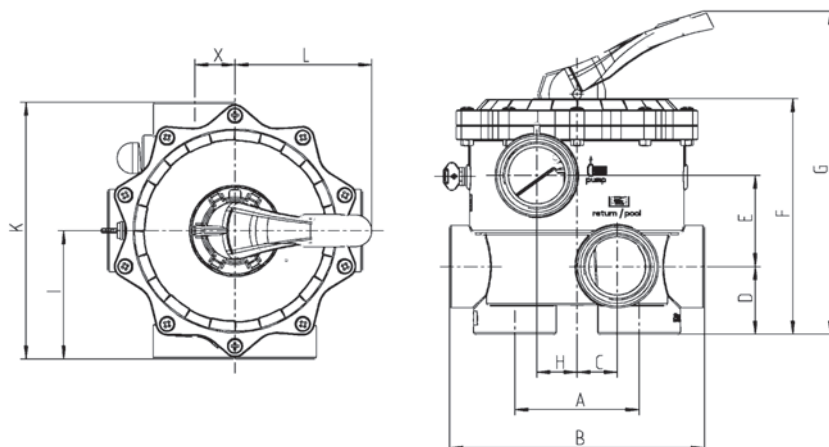
All backwash valves are available in black

7 Position Backwash Valve V6 Side Mount 1 1/2", 2", 3"

Dimensions 1 1/2", 2" and 3"

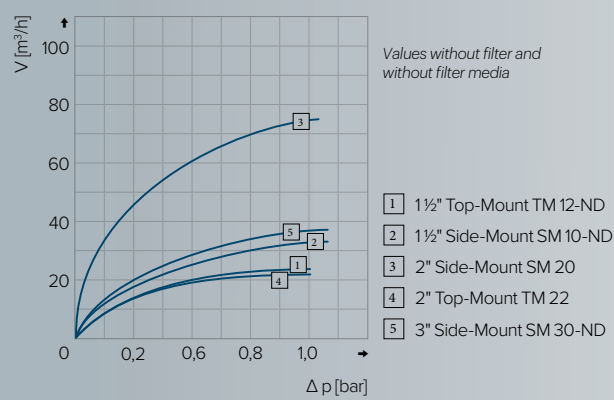
PN	1 1/2"		2"		3"	
	ABS	ASA-GF	ABS	ASA-GF	ABS	ASA-GF
	3,5 bar	6 bar	3,5 bar	6 bar	3,5 bar	5 bar
A	99		110		170	
B	180		227		329	
C	31,5		36		50	
D	48,5		60		85,5	
E	60		81		110	
F	165		210		304	
G	247		296		434	
H	41,5		36		50	
I	87,5		115		165	
K	175		230		330	
L	135,5		135,5		206	
M	-		-		-	
X	30		36		50	

Dimensions in mm

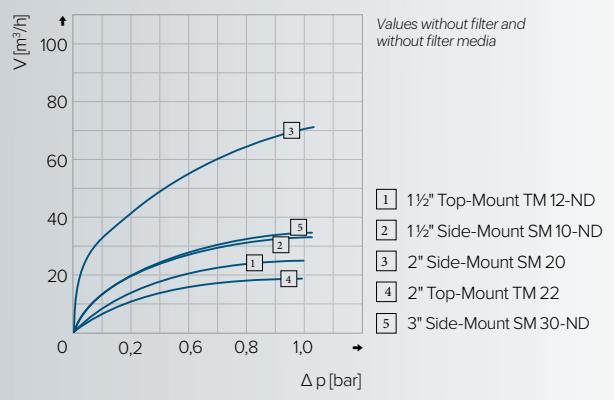


OPTIMAL FLOW AND PRESSURE LOSS VALUES

PRESSURE LOSS AT POSITION 'FILTER'



PRESSURE LOSS AT POSTION 'BACKWASH'



BACKWASH VALVES TOP MOUNT



1½"



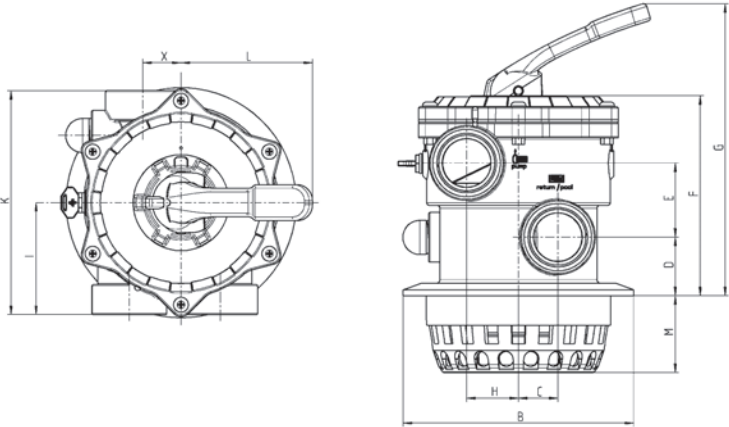
2"

All backwash valves are available in black

7 Position Backwash Valve V6 Top Mount 1½", 2"

Dimensions 1½", 2"		
	1½"	2"
	ABS	ABS
PN	3,5 bar	3,5 bar
A	130	125
B	see flange variations	see flange variations
C	31,5	36
D	38	43
E	59,5	81
F	235,5	280
G	245	292
H	41,5	36
I	90	114,5
K	180	229
L	135,5	135,5
M	46	57
X	30	36

Dimensions in mm

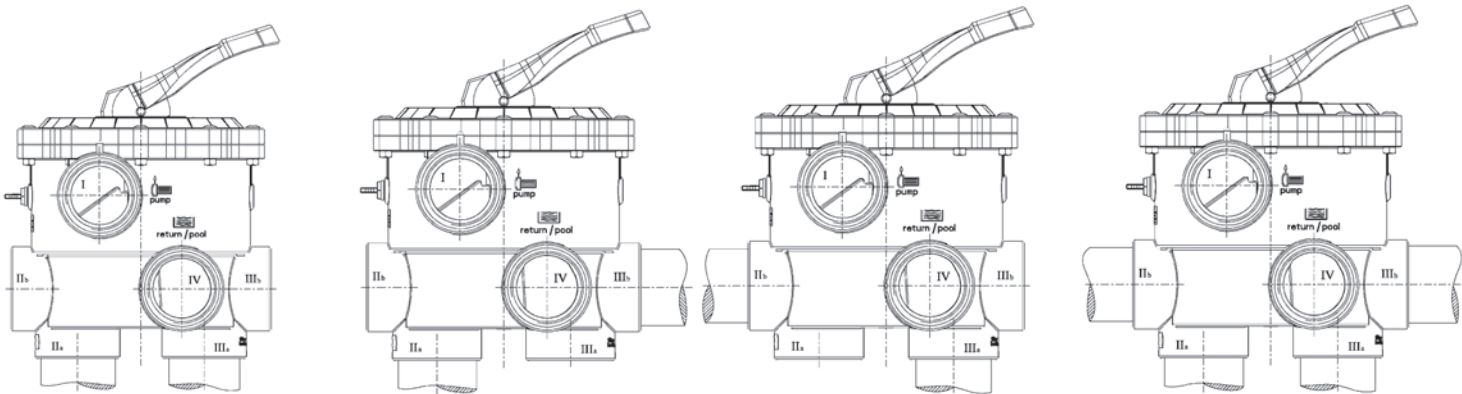


Connection types for PRAHER BACKWASH VALVES

Connection types SIDE MOUNT 1½", 2" and 3"

I	from pump	IV	to pool
II	to filter	V	to drain
III	from filter	-	-

Optionally with BSP threads or solvent unions available



SM 10-1 1½"
SM 20-1 2"

SM 10-2 1½"
SM 20-2 2"

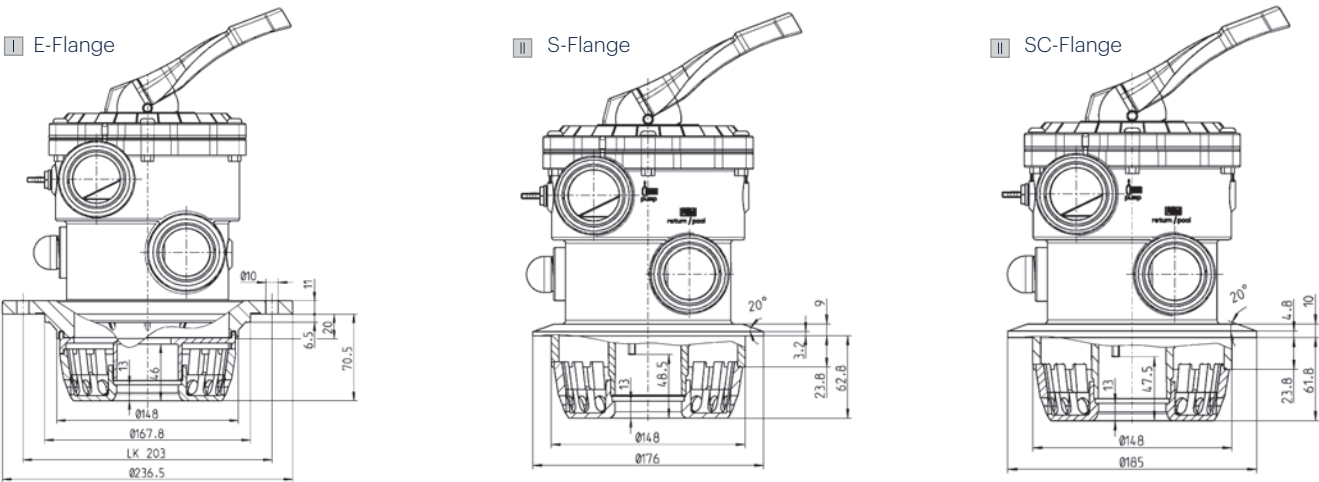
SM 10-3 1½"
SM 20-3 2"
SM 30-3 3"

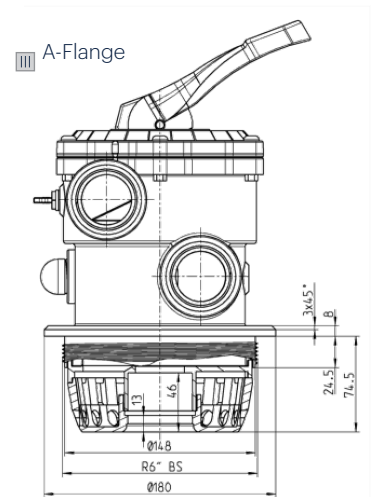
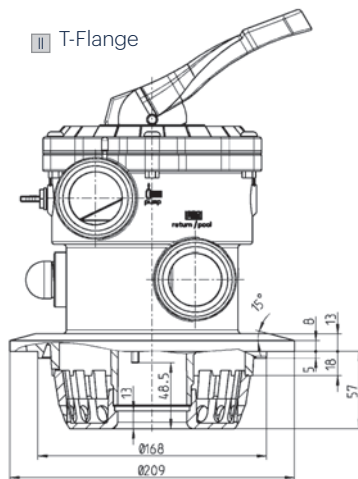
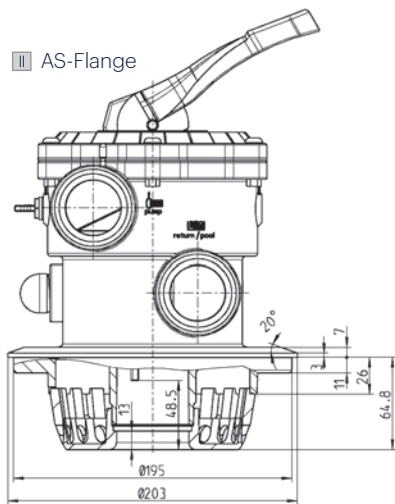
SM 10 AO 1½"
SM 20 AO 2"
SM 30 AO 3"

Connection variations TOP MOUNT 1½" AND 2"

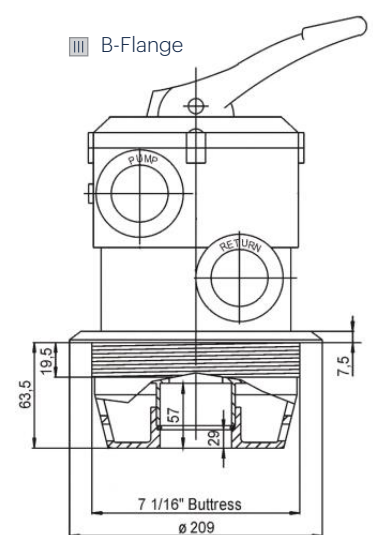
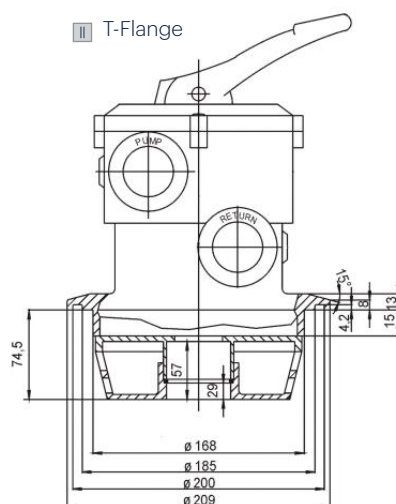
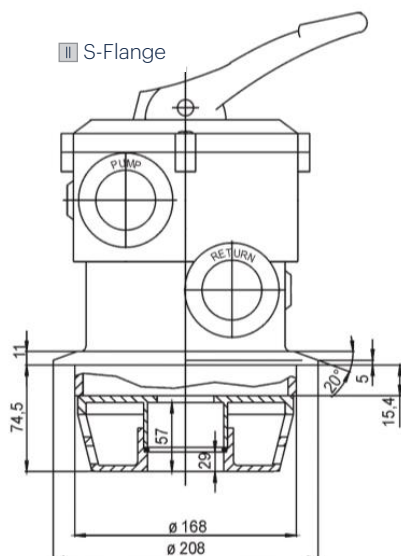
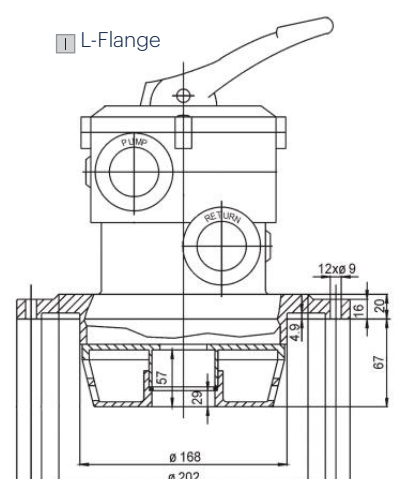
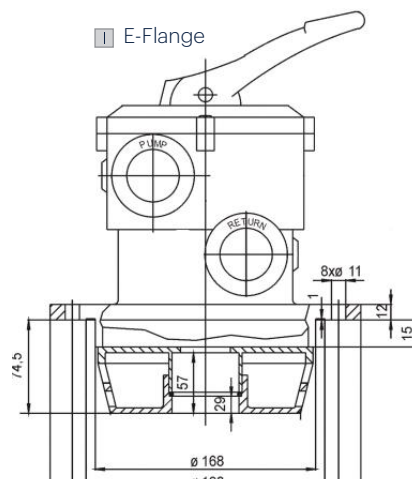
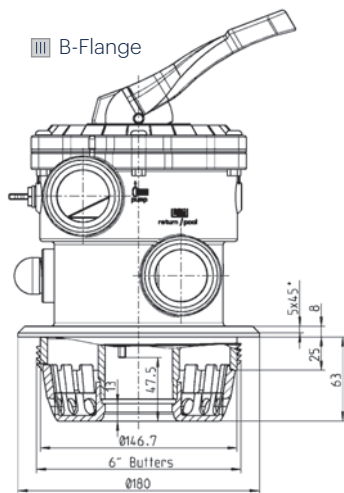
I	bold down flange
II	clamp flange
III	threaded flange

Flange connections TOP MOUNT 1½"



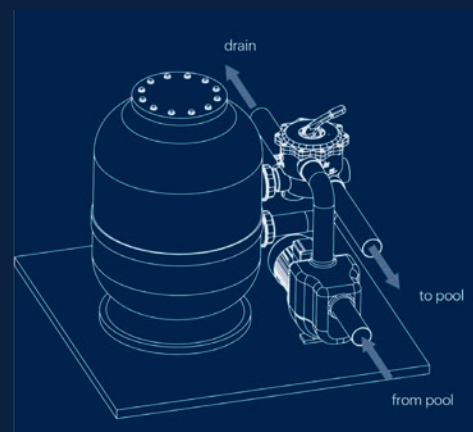


Flange connections TOP MOUNT 2"

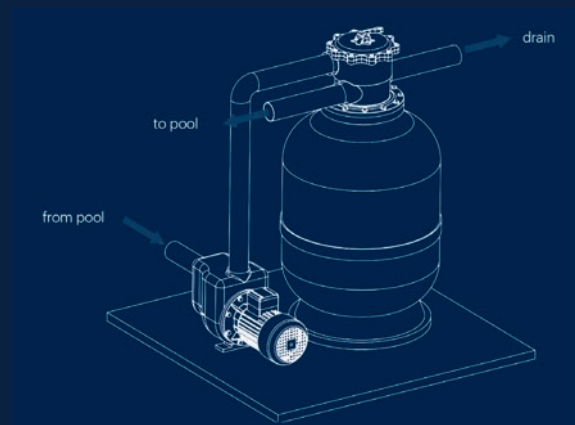




Scheme **SIDE MOUNT**



Scheme **TOP MOUNT**





PIPINGS

for Praher Backwash Valves

Glued Piping Set FOR SIDE MOUNT

7 Position Backwash Valve V6 Side Mount 1 1/2", 2"

1 1/2" and 2" Backwash Valve with glued piping set, suitable for all common filter brands
loose packaging, special pipings on request



Black version
on request

ACCESSORIES

Black and grey versions available on request
Dimensions: d50 and d63, for fitting dimensions: d50, d60, d90

Valve piping set HAYWARD

Prod.No. 170158,
170208



Valve piping set ASTRAL, ESPA, IML, CERTIKIN

Prod.No. 170856,
170151



Pipe elbow and connection piece

Prod.No. 150231,
150252, 150211, 150232,
150251, 150212



Ocean® union 1 1/2", 2", 3"

Prod.No. 170396



Clamp ring set TM12T

Prod.No. 50194

Clamp ring for backwash valve T-Flange
with screws 1,5" (39mm) nuts
and O-Ring 183,52 x 6,99



AQUASTAR® SERIES



Aquastar® Easy II (1 ½", 2")

1

12-34 V AC/DC, 100-240 V AC (50-60 Hz), time + pressure switch for fully-automatic and cost-effective backwashing of filtration systems



Aquastar® MP plc (1 ½", 2")

2

12-34 V AC or 100-240 V AC (50-60 Hz), optimal in combination with PLC control, with ABS Backwash Valve (max. pressure 3,5 bar) or ASAGF (max. pressure 5 bar) available, for fully-automatic and cost-effective backwashing of filtration systems

Aquastar® comfort SafetyPack

3

12-34 V AC/DC, 100-240 V AC (50-60 Hz), digital time control, for fully-automatic and cost-effective backwashing of filtration systems, for exclusiv private and public pools and aquaparks where no external PLC control is available

Aquastar® comfort 3001 (1 ½", 2", 3") with digital timer
Aquastar® comfort 3001 SafetyPack (1 ½", 2") with Digital timer and SP safety accumulator
Aquastar® comfort 4001 (1 ½", 2", 3") with time and pressure switch
Aquastar® comfort 4001 (1 ½", 2") with time and pressure switch
Aquastar® comfort 6501 (1 ½", 2", 3") with 2-channel-timer and pressure switch
Aquastar® comfort 6501 SafetyPack (1 ½", 2") with 2-channel-timer and pressure switch and SP safety accumulator



3" AQUASTAR® COMFORT 4001

time and pressure control for filter dimensions d900, d1050, d1200 (Prod. No. 131250)



FROM MANUAL TO MODERN FULL-AUTOMATIC PRAHER AQUASTAR® SERIE

The easy technology and minimal effort allow the easy adaptation of any automatic Aquastar® drive on our manual Praher Backwash Valves without the removal of the manual backwash valve from the piping.

Depending on the selected Aquastar® drive, the filter system gains more safety through integrated time and/or pressure switches.



FAMILY, SPORT, RELAXATION – THERE IS LIFE IN A POOL.



PERAQUA®
pooled family pleasure

A POOL FULL OF LIFE

It is our highest permission to enrich every pool with creative, perfect fitting, affordable and durable pool technology. Our focus is on the maximum ease of use, safety, cleanliness and sustainability of the selected technology for your pool projects.

Tailored to the digital age, you can choose between fully automatic pool control systems based on WIFI connection or manual control systems in **Peraqua® Quality**.

Our mission is to implement Peraqua® & Praher Top Quality in all areas of sales, marketing, service, logistics, training, repair, and after-sales services with the best dedication.

PERAQUA®

pooled family pleasure

**Peraqua Professional
Water Products GmbH**
Handelsstraße 8, 4300 St. Valentin

T. +43 7435/58488-0
info@peraquaa.com



www.peraqua.com

PERAPLAS DEUTSCHLAND GMBH
Regensburger Ring 12, 91154 Roth
T. +49 9171 9677-1200, F. +49 9171 9677-2209
office.de@peraplas.com

PERAPLAS ČESKO s.r.o.
25101 Říčany-Jažlovice, Zdebradská 62
T. +420 323 63 76-73, F. +420 323 63 76-72
office.cz@peraplas.com

Member of **PRAHER
GROUP**