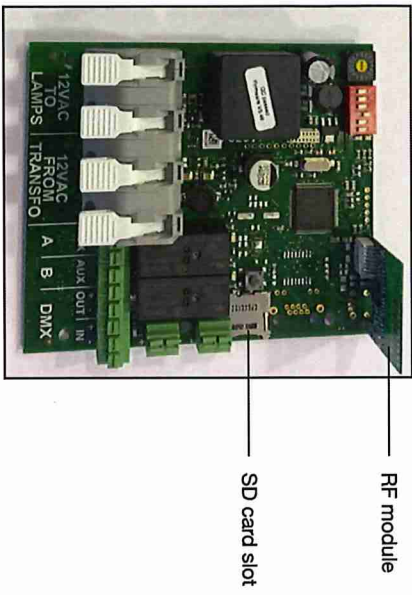


HOW TO UPGRADE THE PLP-REM(-350) CONTROL BOARD

To upgrade the PLP-REM(-350), the following steps need to be taken :

1. Power off the PLP-REM(-350)
2. Remove the RF module from the control board
3. Insert the SD card into the SD Card slot on the control board
4. Power on the PLP-REM(-350)
5. The green and blue LED will flash 6 times.
6. When the green led remains solid, the firmware has been upgraded.
7. Power off the PLP-REM(-350)
8. Remove the SD Card
9. Insert the RF module again
10. Power on the PLP-REM(-350)
11. The PLP-REM(-350) is now DLC-010 compatible.



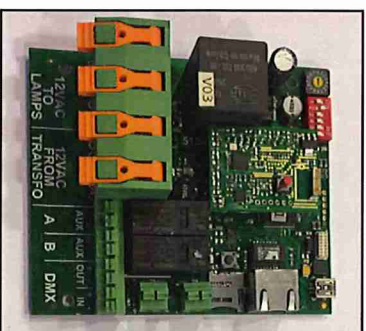
DLC-010 - PLP-REM(-350) COMPATIBILITY

In case a DLC-010 is connected to the PLP-REM(-350) via the CAN interface, it might be required to upgrade the PLP-REM(-350) firmware to the latest version.

- In case the PLP-REM(-350) has the sticker 'DLC-010 ready', no action has to be taken.
- In case the PLP-REM(-350) does not have the sticker 'DLC-010 ready', then your PLP-REM(-350) requires a firmware upgrade.

See below picture of the control boards of the PLP-REM(-350), which are upgradable with an SD card, which is included in the packaging of the DLC-010.

NOT UPGRADABLE
Control board



UPGRADABLE
Control board



After the firmware upgrade of the PLP-REM(-350), the handheld remote control without sticker 'LinkTouch Ready' is no longer compatible with the PLP-REM(-350). In case a compatible handheld remote control is required, then this one can be ordered specifically.