

FILTER & FILTER SYSTEMS



PRIVATE POOLS | COMMERCIAL POOLS
NATURAL POOLS | HOTEL POOLS



FILTERED TO THE PUREST

MAXIMUM POOL PLEASURE REQUIRES THE BEST WATER QUALITY AND CLEANLINESS WITHOUT COMPROMISE.

The pool filter is the most important component for keeping the pool water clean and hygienic. It works in conjunction with a 6-way backwash valve and a pump. The water is sucked in by the pump and enters the filter tank via the 6-way valve. There it is cleaned by a filter medium. We recommend the Nature Works glass filter medium. It is particularly effective, durable and sustainable.

Our filter systems are equipped with the original, manual Praher Plastics® backwash valves. For greater convenience, safety and efficiency, the 6-way valves can be upgraded or retrofitted with our automatic Aquastar® backwash valves (time and pressure-controlled) or with the Loxone® Aquastar® Air pool control system.

®AQUASTAR LOXONE

SMART POOL - THE ENTIRE POOL CONTROL SYSTEM IN ONE APP

The Aquastar® Air works with the Air technology of the smart home provider Loxone® and is part of the iQnect system from Peraqua®. iQnect is the combination of intelligent networked pool technology from the Peraqua® product range. With the aim of being able to operate a fully automatic, safe and sustainable pool system via a smart end device, iQnect from Peraqua® creates 100% added value in daily pool operation.

The pool technology functions can be operated automatically via the app. The combination of pool technology and the Smart Home app also allows all pool parameters to be tracked, such as the pH value, the operating times of the heat pump or the total energy consumption.

Polyester filter BREGENZ 2 with Loxone Aquastar Air pool control and original Praher 6-way valve.



More information on the iQnect system at www.iqnect.net

HOW DO I CHOOSE A FILTER?

The calculation of the filter size depends on the nominal volume flow (Q). This is calculated using the tank volume (V), including the equalisation tank for filter systems with overflow channels, and the circulation time (t).

The circulation time (the time for a complete water exchange) depends on the load and location of the pool and should be ≤ 4 hours for outdoor pools.

The size of the filter is calculated by dividing the nominal volume flow by the maximum filtration speed of 50 m/h (applies to private pool systems).

EXAMPLE*

Pool water volume V: $8 \times 4 \times 1.5 \text{ m} = 48 \text{ m}^3$
 Nominal volume flow Q: $48 \text{ m}^3 / 4 \text{ h} = 12 \text{ m}^3/\text{h}$

Filtration area A: $12 \text{ m}^3/\text{h} / 50 \text{ m/h} = 0.24 \text{ m}^2$

Diameter D: $\sqrt{\frac{A [\text{m}^2] \cdot 4}{\pi}} = \sqrt{\frac{0.24 \text{ m}^2 \cdot 4}{3.1415}} = 0.55 \text{ m}$

CONCLUSION:

We recommend a filter with a minimum diameter of 600 mm.

The figures given are approximate values.

SELECTION AID FOR FILTER DIAMETER DEPENDING ON THE VOLUME FLOW

Filter diameter mm	Filter capacities m ³ /h			
	V=20 m/h	V= 30 m/h	V = 40 m/h	V = 50 m/h
400	2.5	3.8	5.0	6.3
500	3.9	5.9	7.9	9.8
600	5.7	8.5	11.3	14.1
610	5.8	8.8	11.7	14.6
700	7.7	11.5	15.4	19.2
750	8.8	13.3	17.7	22.1
760	9.2	13.8	18.4	23.0
800	10.1	15.1	20.1	25.1
900	12.7	19.1	25.4	31.8
920	13.3	19.9	26.6	33.2
950	14.2	21.3	28.4	35.4
1000	15.7	23.6	31.4	39.3

Selection aid for filter diameters depending on the volume flow (at different filtration speeds)

Source: ÖVS recommendations



2-IN-1: FILTER INCLUDING 6-WAY VALVE

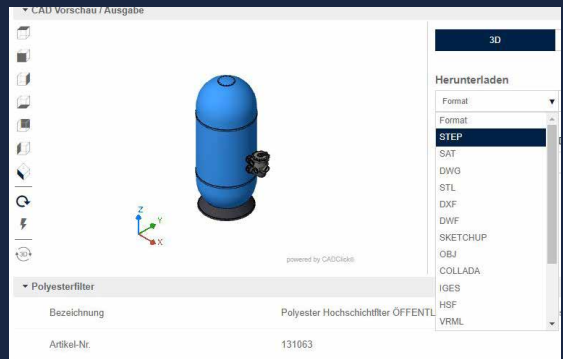
Peraqua filters are supplied with a manual Praher 6-way valve as standard. Each filter is also available without a valve.



For original Praher 6-way backwash valves, we grant a 10-year guarantee on housing and cover breakage.

PERAQUA.CADCLICK.COM

USE OUR 2D/3D DATABASE FOR PLANNING



Use our CAD parts database for your pool projects. Conveniently add our components to your CAD designs at the click of a mouse. You save time and can rely on the data quality of the Peraqua® original data.

FILTER BREGENZ 2

- » **d400 mm transparent lid**
- » **Extra high filtration bed**
- » **Side viewing window**



5-year guarantee on filter housing tightness

The large cover, viewing window and large drainage make maintenance of the BREGENZ 2 filter series much easier. The filter body is made of isophthalic resin, resistant glass fibres and UV-resistant gelcoat. Maximum mechanical resistance to constant working loads such as pressure fluctuations, closing/opening the valve, starting/stopping the pump, etc. is guaranteed.

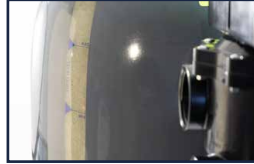
Operating pressure: max. 2.5 bar, incl. original Praher 6-way valve, incl. manometer, stainless steel insert made of AISI 316 for mounting the manometer, nickel-plated brass cover nuts



Large transparent lid with 400 mm diameter; black lid made of PPGF on request



Large drain valve 1 1/4" for fast draining



Transparent viewing window for the sand level

Polyester filter BREGENZ 2	d520	d640 (1 1/2")	d640 (2")	d760	d900
Item No.	7300243	7300244	7300245	7300246	7300247
Connection	1 1/2"	1 1/2"	2"	2"	2"
Ø D outside (mm)	520	640	640	760	900
Height (mm)	730	800	800	970	970
Filtration area (m²)	0.21	0.32	0.32	0.45	0.64
Flow rate (m³/h at 50 m/h)	10	14	16	23	32
Filter bed height (mm)	480	504	504	598	601
Nature Works filter glass (kg)*	100	140	140	220	340
Filter sand (kg)**	100	150	150	225	350

* granulate size 0.6 - 1.2 mm

** granulate size 0.4 - 0.8 mm

COMPACT FILTER SYSTEM BREGENZ 2

- » **Incl. Smart Europro filter pump**
- » **Pre-assembled and piped**

Complete filter system pre-assembled with Praher 6-way valve and bonded Praher pipework set on a noise-reducing PE filter pallet.

Bregenz 2 filter: Made of isophthalic resin, resistant glass fibres and UV-resistant gelcoat. The large transparent flange cover (d400 mm), the viewing window for the sand level and the large drain (1 1/4") make the filter particularly easy to inspect and maintain.

Europro filter pump: Self-priming, high-performance swimming pool pump with integrated pre-filter and wide performance range (single-phase and three-phase). Extremely quiet and very reliable.



Polyester filter BREGENZ 2	7301202	7300802	7300804
Item No.	7301202	7300802	7300804
Connection	1 1/2"	1 1/2"	2"
Ø D outside (mm)	520	640	640
Pump P2 (kW)	0.33 (0.5 PS)	0.5 (0.75 PS)	0.5 (0.75 PS)

FILTER LINZ

- » Drain directly below valve connections
- » DIN EN 16713 compliant
- » Transparent filter lid on request



5-year guarantee on filter housing tightness

Laminated side mount filter for private pools made of glass fibre reinforced plastic. Handmade to ensure maximum chemical and mechanical resistance. The installation parts are made of PP, ABS and PVC. All screws used are made of high-strength, corrosion-resistant INOX (stainless steel), nuts are made of nickel-plated brass. Supplied with vent valve and pressure gauge. Black flange cover (d210 mm), incl. original Praher 6-way valve

DIN EN 16713 compliant,
Max. operating pressure: 2.0 bar (available with 2.5 bar on request)



Polyester filter Linz	d500	d610	d610	d765	d920
Item No.	7301603	7301604	7301605	7301606	7301607
Connection	1½"	1½"	2"	2"	2"
Ø D outside (mm)	510	620	620	770	920
Height (mm)	630	735	735	760	940
Filtration area (m²)	0.18	0.27	0.27	0.43	0.64
Flow rate (m³/h at 50 m/h)	9.1	13.7	13.7	21.5	31.9
Filter bed height (mm)	400	400	400	400	400
Nature Works filter glass (kg)*	84	147	147	210	315
Filter sand (kg)**	100	175	175	250	375

* granulate size 0.6 - 1.2 mm

** granulate size 0.4 - 0.8 mm

FILTER BREGENZ 3

- » d390 mm filter lid
- » DIN EN 16713 compliant
- » Drain directly below valve connections



5-year guarantee on filter housing tightness

Side mount filter container made of high quality glass fibre reinforced plastic. With large opening at the top and drainage under the valve connections. Handmade to ensure maximum chemical and mechanical

resistance. Large transparent filter lid (d390 mm). The built-in parts are made of PP, ABS and PVC. All installed screws are made of high-strength, corrosion-resistant INOX (stainless steel), nuts made of nickel-plated brass, ozone-resistant internal coating, supplied with bleed valve and manometer, incl. original Praher 6-way valve

DIN EN 16713 compliant,
Max. operating pressure: 2.0 bar (available with 2.5 bar on request)



Transparent or black lid



Polyester filter BREGENZ 3	d500	d640 (1½")	d640 (2")	d765	d920
Item No. transparent lid / black lid	7301357 / 7301680	7301358 / 7301681	7301359 / 7301682	7301360 / 7301683	7301361 / 7301684
Connection	1½"	1½"	2"	2"	2"
Ø D outside (mm)	510	620	620	770	920
Height (mm)	630	735	735	805	930
Filtration area (m²)	0.18	0.27	0.27	0.43	0.64
Flow rate (m³/h at 50 m/h)	9.1	13.7	15.8	21.5	31.9
Filter bed height (mm)	400	400	400	400	400
Nature Works filter glass (kg)*	84	147	147	210	315
Filter sand (kg)**	100	175	175	250	375

* granulate size 0.6 - 1.2 mm

** granulate size 0.4 - 0.8 mm

FILTER VIENNA 1

» d205 mm transparent filter lid



3-year guarantee on filter housing tightness

Side mount filter container made of reinforced, UV-resistant fibreglass. Suitable for private pools. The swivelling filter arm for easier filling of the filter with filter medium, the integrated ventilation to prevent air bubbles in the filter and the easy-to open, transparent filter lid ensure particularly easy maintenance. Incl. original Praher 6-way valve, operating pressure: max. 2.5 bar

Complete filter system pre-assembled with Praher 6-way valve and bonded Praher pipework set on a sound-absorbing PE filter pallet. Incl. self-priming swimming pool pump series O / series M.



Polyester filter VIENNA 1	d500	d600	d750	d900	d500	d600
	Side Mount			Compact filter system		
Item No.	74550	74551	74552	74553	75039	75040
Connection	1½"	1½"	2"	2"	1½"	1½"
Ø D outside (mm)	500	600	750	900	500	600
Filter pump	-	-	-	-	Ocean® Series O 0,57 kW	Smart Series M 0,55 kW
Height (mm)	805	800	985	1050	805	800
Filtration area (m²)	0.19	0.30	0.44	0.64	0.19	0.3
Flow rate (m³/h at 50 m/h)	10	14	22	32	10	14
Filter bed height (mm)	415	455	555	630	415	455
Nature Works filter glass (kg)*	75	115	240	265	75	115
Filter sand (kg)**	75	125	250	275	75	125

* granulate size 0.6 - 1.2 mm

** granulate size 0.4 - 0.8 mm

FILTER VIENNA 2 Top Mount

» d175 mm service hole



2-year guarantee on filter housing tightness

Top mount filter container made of reinforced, UV-resistant fibreglass. Suitable for private pools. The drainage set for easier emptying of the filter and the integrated ventilation to prevent air bubbles in the filter ensure easy maintenance. Incl. original Praher 6-way valve, operating pressure: max. 2.5 bar

Complete filter system pre-assembled with Praher 6-way valve and bonded Praher pipework set on a sound-absorbing PE filter pallet. Incl. self-priming swimming pool pump series O / series M.



Polyester filter VIENNA 2 Top Mount	d400	d510	d620	d400	d510	d620
	Top Mount			Compact filter system		
Item No.	7300506	7300507	7300508	7301299	7301300	7301301
Connection	1½"	1½"	1½"	1½"	1½"	1½"
Ø D outside (mm)	400	510	620	400	510	620
Filter pump	-	-	-	Series M33	Series M50	Series M75
Height (mm)	795	1020	1090	714	1000	1000
Filtration area (m²)	0.13	0.20	0.30	0.13	0.20	0.30
Flow rate (m³/h at 50 m/h)	6.5	10.2	15.1	6.5	10.2	15.1
Filter bed height (mm)	375	475	525	375	475	525
Nature Works filter glass (kg)*	60	100	140	60	100	140
Filter sand (kg)**	70	100	150	70	100	150

* granulate size 0.6 - 1.2 mm

** granulate size 0.4 - 0.8 mm

PPGF FILTER GRAZ

» two-part



2-year guarantee on filter housing tightness

Two-part side mount filter container made of glass fibre reinforced polypropylene, clamping ring made of chrome steel, incl. pressure gauge, incl. original Praher 6-way valve, operating pressure: max. 1.6 bar

Compact filter system consisting of polypropylene (PPGF) filter, self-priming M series filter pump and incl. original Praher 6-way valve, fully piped and mounted on a noise-reducing PE filter pallet



Polyester filter GRAZ	d400	d500	d600	d400	d500	d600
	Side Mount			Compact filter system		
Item No.	78612	78613	78614	74429	74430	74431
Connection	1½"	1½"	1½"	1½"	1½"	1½"
Ø D outside (mm)	400	500	600	400	500	600
Filter pump	-	-	-	Series M (0.16 kW)	Series M (0.33 kW)	Series M (0.55 kW)
Height (mm)	725	795	825	725	795	825
Filtration area (m²)	0.10	0.19	0.28	0.10	0.19	0.28
Flow rate (m³/h at 50 m/h)	6	10	15	6	10	15
Filter bed height (mm)	430	390	405	430	390	405
Nature Works filter glass (kg)*	50	70	120	50	70	120
Filter sand (kg)**	50	80	120	50	80	120

* granulate size 0.6 - 1.2 mm

** granulate size 0.4 - 0.8 mm

GLASS FILTER MEDIA NATURE WORKS

Crystal-clear pool water with the highest hygiene factor thanks to glass Filter medium made of the purest, white, recycled flat glass, resistant to biofilm and bacteria, Nature Works is 99.999% free of impurities, fewer backwashing processes thanks to anti-compaction technology, maximum service life, economical use of pool chemicals, filtration up to 1 µm

WHAT MAKES NATURE WORKS SO UNIQUE AND SUSTAINABLE

Anti-compaction technology prevents compaction and micro-channel formation in the filter material. The result is low pressure loss and optimised backwashing efficiency. The pressure loss before and after filtering is minimal and demonstrably 50-60% lower compared to other glass filter media.

Nature Works® generally recommends a monthly backwash at a comparatively low filter speed of just 30 m/h. Water savings of more than 75% are quite realistic with Nature Works® Hi-Tech glass filter media. This also reduces the consumption of chemicals.



Nature Works glass filter media		
Item No.	7300372	7301553
Granulate size (mm)	0.6 - 1.2	0.6 - 1.2
Packing unit (kg bag)	20	1000
Gross weight (kg)	20	1015

PRAHER PLASTICS  **BACKWASH VALVES**
AQUASTAR® SERIES

The Aquastar® backwash valves are a product series of automatic backwash valves for filter systems in swimming pools. Say goodbye to manual backwashing and experience convenient cleaning with modern technology.

50 years of experience in research and development and millions of applications speak in favour of the quality of the Aquastar® series. Peraqua therefore maintains a wide range of manual and automatic backwash valves (side mount / top mount, 1½" / 2" / 3", 3.5 - 6 bar operating pressure). The valves are characterised by optimum flow values, above-average service life and low pressure loss.

The simple installation on manual Praher 6-way valves (side mount and top mount) allows quick, subsequent adaptation to all filter systems.

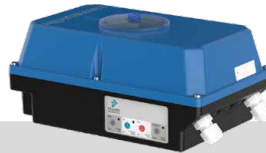
Safety is the top priority with Aquastar®:

Visual position indicator shows the current valve position, manual override enables manual control in an emergency, pressure sensor monitors the system pressure, protection class IP65



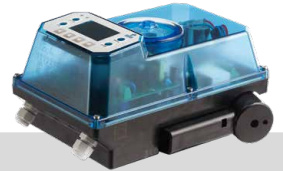
Aquastar® MP6 plc

- » External PLC/PLC control
- » Compatible with smart home controls



Aquastar® Easy 2

- » Timer switch
- » Optional additional pressure switch
- » Pump monitoring



Aquastar® Control

- » Automatic control via settings on the digital display
- » Pressure switch and timer
- » Integration of numerous pool control functions (control of pump, temperature, solar system and water level)

AQUASTAR FULLY AUTOMATIC FILTER CONTROL



FULLY AUTOMATIC FILTER AND POOL CONTROL WITH AQUASTAR®

Manual pool filters of all common filter brands can be retrofitted with automation using our Aquastar® models and a suitable valve and pipework set.

An automatic Aquastar® drive can be fitted to filter systems including an original manual Praher 6-way valve. This applies to both side mount and top mount valves.

At Peraqua, we can also fit the Aquastar actuator to the valve on request. When ordering in our online shop, select a filter with a manual valve and a matching Aquastar® actuator. Please specify your installation requirements under comments when ordering. Even manual pool filter systems of all common brands can be subsequently automated.

SIMPLE & QUICK CONVERSION



HOW TO - click here for the video



HIGH-LAYER FILTER

LEOBEN 2 DIN / Ö-NORM



» **Star distributor or nozzle plate**

Polyester high-layer filter made of reinforced fibreglass for private and hotel pool systems, manufactured to industrial standards, with star distributor or nozzle plate (nozzle plate in accordance with DIN 19643/ÖNORM 6216), side opening Ø 220 mm and viewing glass, swivelling filter arm to make it easier to fill the filter with filter medium, RAL5011 steel blue, with black PPGF flange cover, 1 m or 1.2 m sand bed, drainage set for easier draining of the filter, integrated ventilation to prevent air bubbles in the filter, incl. original Praher 6-way backwash valve and pipework set, operating pressure: 0 - 1.6 bar



2-year guarantee on filter housing tightness

Polyester high-layer filter LEOBEN 2

Item No.	Star distributor, Sand bed 1.0m			Star distributor, Sand bed 1.2 m			Nozzle plate, Sand bed 1.2m		
	7300509	7300510	7300511	7300512	7300513	7300514	7300515	7300516	7300517
Connection	2"	2"	2"	2"	2"	2"	2"	2"	2"
Ø D outside (mm)	620	750	900	620	750	900	620	750	900
Height (mm)	1645	1645	1645	1845	1845	1845	1845	1845	1845
Filtration area (m²)	0.30	0.44	0.64	728	728	728	0.30	0.44	0.64
Flow rate (m³/h at 30 m/h)	9.4	13.8	19.9	9.4	13.8	19.9	9.4	13.8	19.9
Flow rate (m³/h at 40 m/h)	12.0	18.0	26.0	12.0	17.9	25.8	12.0	17.9	25.8
Filter bed height (mm)	1000	1000	1000	1200	1200	1200	1200	1200	1200
Nature Works filter glass (kg)*	403	589	849	484	641	1019	484	641	1019
Filtersand (kg)*	452	662	954	543	720	1145	543	720	1145

* Quantity to achieve a pouring height of 100 mm

GFK-FILTER

STEYR DIN / Ö-NORM



» **Nozzle plate**

» **ÖNORM filter available as a singlelayer or multi-layer variant**

Laminated filter tank made of high-quality glass fibre reinforced plastic, handmade for maximum chemical and mechanical resistance, the built-in parts are made of PP, ABS and PVC, all built-in screws are made of high-strength, corrosion-resistant stainless steel, the nuts are made of nickel-plated brass, the filter tank is supplied including connection for manual or automatic venting and draining, inspection window, large manhole, operating pressure: max. 2 bar (PA) / 2.5 bar (PP)



5 years guarantee on filter housing tightness

5-year guarantee on filter housing tightness

GFK Filter STEYR

Technical data for ÖNORM single-layer filters at shop.peraqua.com

Item No.	DIN 19643 / Multi-layer filter							Ö-NORM 6216 / Multi-layer filter						
	7301702	7301703	7301664	7301665	7301666	7301667	7301668	7301704	7301705	7301669	7301670	7301671	7301672	7301673
Connection (DN)	90/75	90/80	110/90	140/110	160/140	160/140	225/160	90/75	110/90	110/90	140/110	160/140	160/140	225/160
Ø D outside (mm)	635	790	945	1120	1295	1470	1780	590	740	900	1050	1230	1430	1780
Height (mm)	2100	2350	2350	2500	2500	2700	2900	2100	2350	2350	2500	2500	2700	2900
Filtration area(m²)	0.27	0.43	0.64	0.87	1.19	1.61	2.49	0.27	0.43	0.64	0.87	1.19	1.61	2.49
Flow rate (m³/h at 35 m/h)	9.6	15.1	22.3	30.3	41.6	56.2	87.1	9.6	15.1	22.3	30.3	41.6	56.2	87.1
Flow rate (m³/h at 50 m/h)	13.7	21.5	31.9	43.3	59.4	80.3	124.4	13.7	21.5	31.9	43.3	59.4	80.3	124.4
Top / side opening (DN mm)	210 / 210	210 / 210	210 / 430	500 / 500	500 / 500	500 / 500	500 / 500	210 / 210	210 / 210	210 / 430	500 / 500	500 / 500	500 / 500	500 / 500
Max. filter bed height (mm)	1200	1200	1200	1500	1500	1500	1500	1200	1200	1200	1500	1500	1500	1500
Nature Works filter glass (kg)*	34	54	80	108	149	201	311	34	54	80	108	149	201	311
Filtersand (kg)*	41	65	95	130	178	241	373	41	65	95	130	178	241	373

* Quantity to achieve a pouring height of 100 mm

GFK FILTER EISENSTADT DIN / Ö-NORM

Wound GFK filter to DIN 19605-19643/19644, with nozzle plate and nozzles (min. 70 per square metre), made of isophthalic resin, inner coating made of gel-coat vinyl ester DIN 18820, ozone-resistant, manhole on the side and top, sight glass Ø 150-210-300, connection flange PN 10, drainage, venting, GRP feet, Ö-NORM version available as single-layer filter or multi-layer filter, various sizes of sight glasses, manhole, optional cover, available in 2 or 3 parts, operating pressure: max. 4 bar (up to d2000)

Sizes from Ø 600-3200 mm available, technical data for all sizes on request or in our price list



GFK Filter EISENSTADT wound	on request							
Ø Filter (mm)	900	1000	1100	1250	1400	1500	1600	1800
Height (mm)	2150	2250	2250	2350	2400	2450	2500	2550
Connection (DN1/DN2)	100/100	100/125	100/125	125/125	125/150	150/150	150/500	150/200
Filtration area (m²)	0.63	0.78	0.95	1.22	1.54	1.76	2.01	2.54
Flow rate (m³/h at 30 m/h)	19	24	29	37	46	53	60	76

PRAHER PLASTICS **PVC FITTINGS, VALVES & PIPES**

D90 - D315: DESIGNED FOR SAFETY & LONG-TERM USABILITY

Praher Plastics® produces an extensive range of butterfly valves, ball valves and diaphragm valves for public pool construction. The butterfly valves and ball valves are also available in electric and pneumatic versions.

The high-quality fittings offer reliability, durability and economy. Our comprehensive spare parts guarantee (up to 10 years for Praher® products) and an above-average service life thanks to the use of high-quality materials ensure many years of use.

BUTTERFLY VALVES



Butterfly valve K4
Manual, automatic with pneumatic actuator or electric actuator

BALL VALVES



2-way ball valve M1 / 3-way ball valve S4
Automatic with pneumatic actuator or electric actuator

DIAPHRAGM VALVES



Manual diaphragm valve T7 or automatic diaphragm valve T4 with pneumatic actuator

6-WAY VALVES



Aquastar® Control 3"
Fully automatic 6-way backwash system with intelligent pool control functions

FAMILY, SPORT, RELAXATION - THERE'S LIFE IN A POOL.



PERAQUA®

A POOL FULL OF LIFE

Our top priority is to enrich every pool with creative, perfect, affordable and, above all, durable pool technology. The focus is on ensuring that the selected technology provides maximum ease of use, safety, cleanliness and sustainability for your project.

Adapted to the digital age, you can choose between fully automatic pool control solutions based on WiFi or manual system solutions in **Peraqua®-Quality**.

Our mission is to implement Peraqua® & Praher top quality in all areas of our range of services from sales, marketing, logistics, training, service as well as repair and after-sales service with the best commitment.

PERAQUA®



**Peraqua Professional
Water Products GmbH**
Handelsstraße 8, 4300 St. Valentin

T. +43 7435/58488-0
info@peraqua.com



shop.peraqua.com



PERAPLAS DEUTSCHLAND GMBH
Regensburger Ring 12, 91154 Roth
T. +49 9171 9677-1200
office.de@peraplas.com



PERAPLAS ČESKO s.r.o.
25101 Říčany-Jažlovice, Zdebradská 62
T. +420 323 63 76-73
office.cz@peraplas.com



CHEMIA BRUGG AG
Aarauerstrasse 51 | 5200 Brugg
T. +41 56 460 62 60
info@chemia.ch

Member of **PRAHER
GROUP**